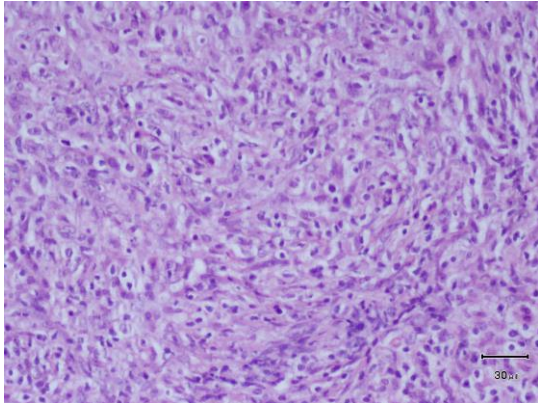


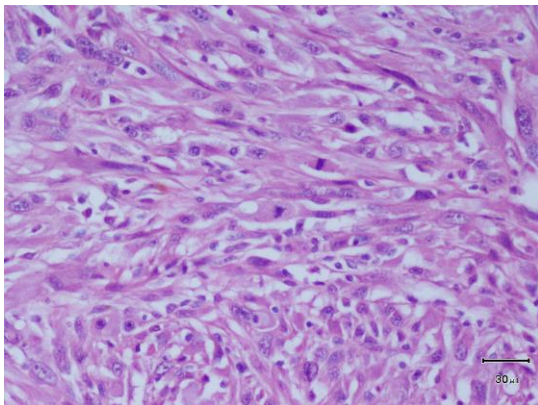
Figures & Legends for main text.

Figure 1. H & E section of poorly differentiated histiocytic sarcoma



Poorly differentiated histiocytic sarcoma. Neoplastic cells are pleomorphic admixed with large numbers of lymphocytes (H&E).

Figure 2. H & E section of spindle cell variant



Histiocytic sarcoma, spindle cell subtype. Neoplastic cells are spindle to round with moderate amount of cytoplasm. Mitotic figures are present (H&E).

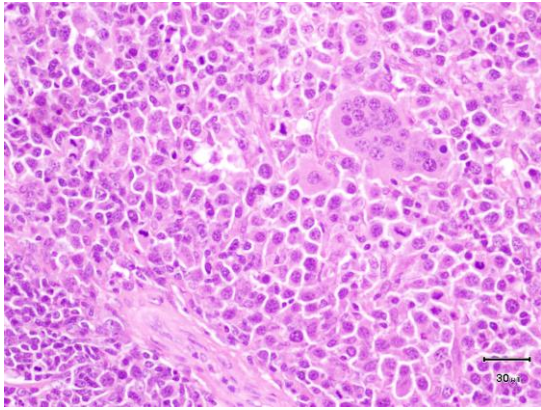
Figure 3. Gross appearance of histiocytic sarcoma within the biceps musculature



Figure 4. Gross appearance of histiocytic sarcoma affecting the spleen

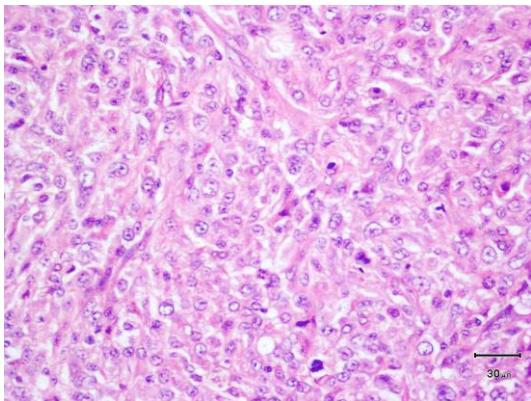


Figure 5. H & E section of histiocytic subtype



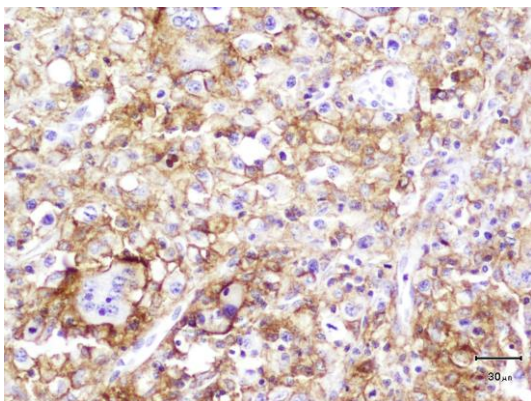
Histiocytic sarcoma, histiocytic subtype with large round neoplastic histiocytic cells with some multinucleated giant cells and scattered lymphocytes (H&E).

Figure 6. H & E section of histiocytic-spindle-pleomorphic subtype



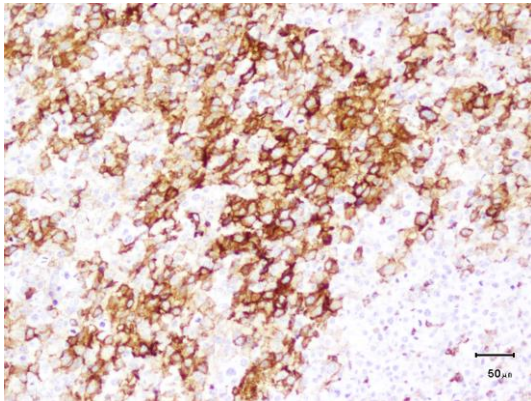
Histiocytic sarcoma, histiocytic-spindle-pleomorphic subtype with few fibroblastic-like cells admixed with neoplastic histiocytes, with a pale eosinophilic cytoplasm (H&E).

Figure 7. Immunostaining showing positive CD18



Histiocytic sarcoma with large numbers of cells with cytoplasmic immunopositivity for CD18.

Figure 8. Immunostaining showing positive CD11d



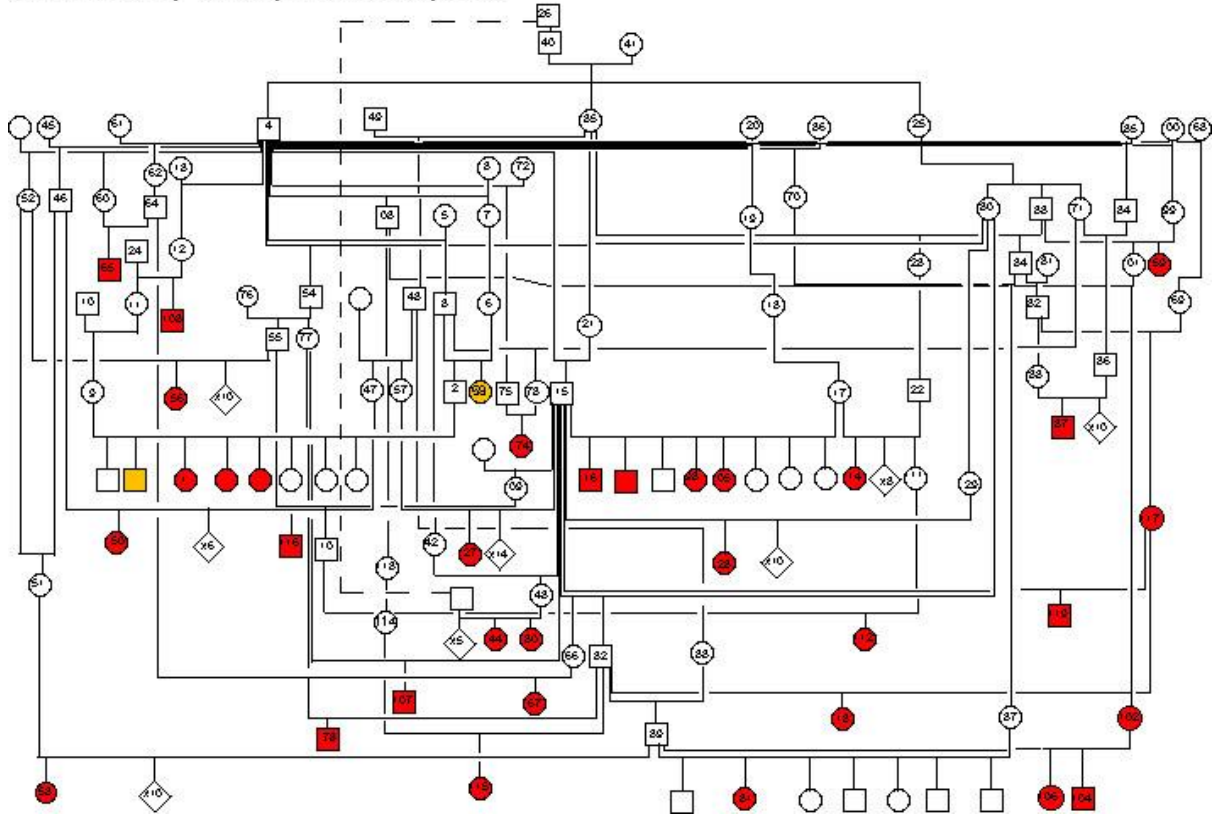
Histiocytic sarcoma with strong diffuse cytoplasmic immunostaining for CD11d.

Figure 9. Gross appearance of metastatic nodules of histiocytic sarcoma in the liver of an affected dog.



Figure 10

Sarcoma Family 1: Mainly Health Survey cases



Pedigree of one family courtesy of Dr David Sargan. Squares are males, circles are females. Red denotes histologically confirmed histiocytic sarcoma, yellow denotes cancer of unknown type. In the higher generations there may have been cases with tumours that we were not aware of.

Figure 11

The Oncology Team at QVSH



From the left: Beth Robison (Radiation Technologist), Drs Jane Dobson and Sarah Mason (Diplomates ECVIM-CA [Oncology]), Antonio Giuliano (Senior Training Scholar in Medical Oncology), Alice Bugg (Oncology Nurse)